

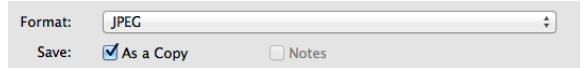
PLACE PHOTO INTO TYPE



Open the photo or image which will be used as a mask for the type. Make sure the file dimensions are large enough to fill the space the graphic will be placed into on the Adobe® InDesign® page without enlarging and the resolution is 300 dpi.

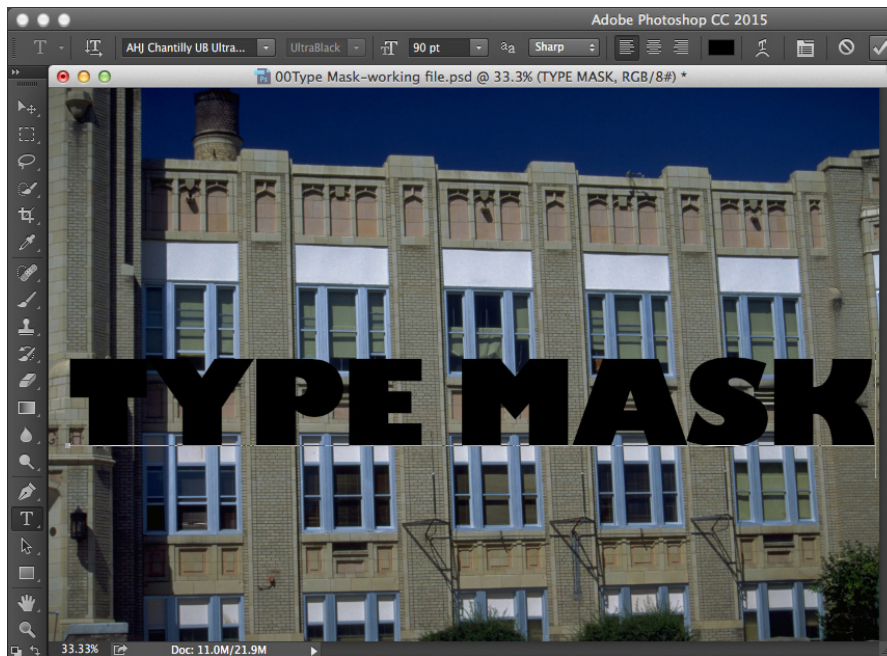
SAVE A COPY

- Open your photo in Photoshop.
- Work from a copy, not the original; go to **File > Save as...**
- Under the Format field, check **Save: As a Copy**.
- Click **Save**.
- Press 'd' on your keyboard to set the default black & white color chips.



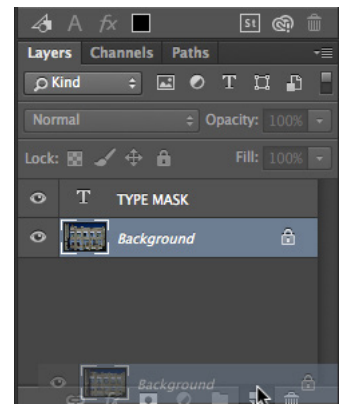
CREATE TEXT

- Select the **Type** tool from the Toolbox.
- Choose a thick font from the Options palette
- Use a large point size.
- Click on the image and type the text.
- Press the **Commit** button (check mark in Options palette).



DUPLICATE BACKGROUND LAYER

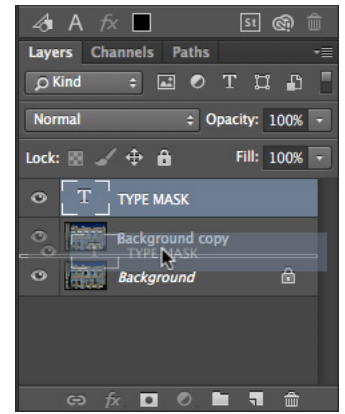
- Click on the Background layer and drag it onto the **New Layer** icon (second icon from right)
- Go to the **Layers** palette menu and choose **Duplicate Layer**.
- Turn off the Background layer by clicking on the eye icon to the left of the Background layer.





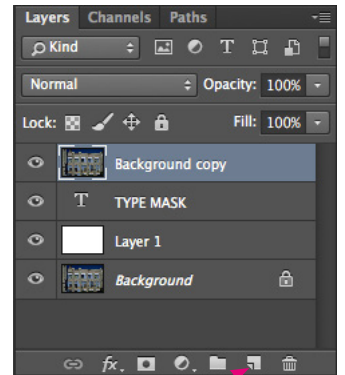
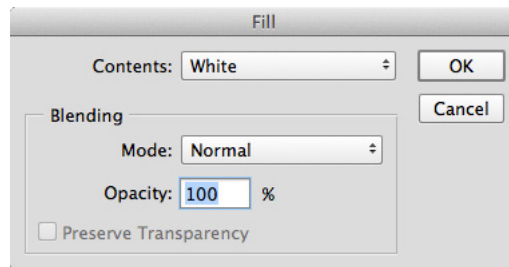
MOVE TEXT LAYER

- Move the **Text** layer below the Background copy layer
- Click on the **Text** layer and drag it between the **Background copy** layer and the **Background** layer.
- Release the mouse button.
- Make sure the **Background copy** layer is highlighted.
- The text layer will momentarily disappear.



CREATE NEW LAYER

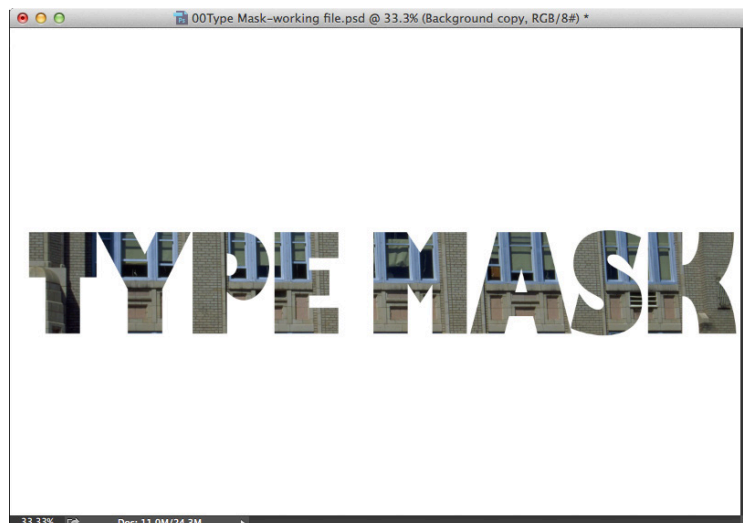
- Choose **New Layer** from the Layers palette menu, then click **OK** or
- Click on the **New Layer** icon (second icon from right)
- Fill the new layer with **White**.
- With the new layer highlighted and the **Marquee** tool selected
- Press **Command/Ctrl + A** or go to **Select > All**
- Then go to **Edit > Fill** and select **White** from the Content drop down menu.
- Drag this layer below the text layer.



NEW LAYER ICON

PLACE IMAGE IN TEXT

- Click on the **Background copy** layer
- Press **Command-Option-G** on the Macintosh
- or **Control-Alt-G** in Windows
- or go to the **Layers** palette menu and choose **Create Clipping Mask**.
- The image will be placed inside the text.



yearbooks.biz

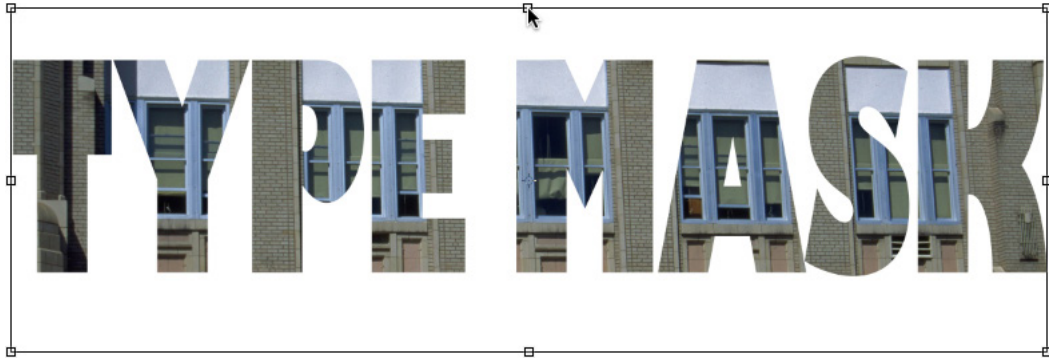
yearbookdiscoveries.com





TRANSFORM TEXT

- Click on the text layer to highlight it.
- Scale the text can be scaled by going to **Edit > Free Transform**.
- Drag the handles on the sides and corners to enlarge or reduce the text.



CROP THE IMAGE

- Use the **Marquee** tool to draw a box around the text.
- Go to the **Layer** menu and select **Crop**.



MODE CHANGE

- Go to **Image > Mode**.
- Change the Mode to **Grayscale** for black and white pages or **CMYK** for color pages.

SAVE

- Go to **File > Save** or **Command/Ctrl + S**
- Save the file as a **PSD** or **TIFF** file.
- To save as a high-res JPEG file
 - Select **Flatten image** from the **Layers** pop-up menu before saving.
- Place this file into your InDesign file.
- Send this file along with your InDesign pages.